



HFX™ Series – Housing Filtration Excellence Engineered for Performance

HFX-SS-BF-SB™ – Stainless Steel Single Bag Housing Technical Overview

Filtracore Asia's **HFX-SS-BF-SB™ Stainless Steel Single-Bag Housings** are engineered for liquid-filtration duties that demand mechanical strength, pressure capability, and hygienic or industrial finishes. They are fabricated in **SS304** or **SS316L** as standard, with **Duplex 2205**



and **super duplex 2507** available on request for chloride-bearing or aggressive services, extending the operating envelope beyond typical thermoplastic housings when correctly sized and gasketed. The platform accepts **#01** and **#02** filter bags, with custom **#03/#04** options on request. A precision-machined bag seat and perforated stainless support basket maintain seal compression and alignment to minimise bypass across felt/depth, mesh, or pleated media.

Bodies are offered as **side-entry (HFX-SS-BF-SB-BFS™)** or **top-entry (HFX-SS-BF-SB-BFT™)** to suit piping geometry, and closures include **quick-clamp**, **swing-bolt**, **screw-cap**, or **eye-bolt**, selected to match the required pressure/temperature class and cleaning method. Steam-jacket and heat-trace options support viscosity control in temperature-sensitive services, and wetted stainless surfaces are **pickled and passivated** as standard, with finish choices from **industrial bead-blast/mechanical polish** to **sanitary polish (target $\leq 0.6 \mu\text{m Ra}$)** and **electropolish (target $\leq 0.4 \mu\text{m Ra}$)** where validated CIP/SIP is required.

Typical single-bag models are available **up to 10–16 bar at 20 °C**, with temperature derating applied; service temperatures **up to ~150–200 °C** are achievable when the selected closure and gasket support those conditions, and steam or rapid thermal shock is excluded unless validated for the specific SKU.

Units can be supplied with **ASME Section VIII** or **PED 2014/68/EU** conformity when specified for the ordered configuration and documented on the nameplate. With the appropriate geometry, finishes, and elastomers, sanitary variants for food and pharma service are available, and **food-contact** and **USP Class VI** elastomer options can be provided when requested and supported by certificates.

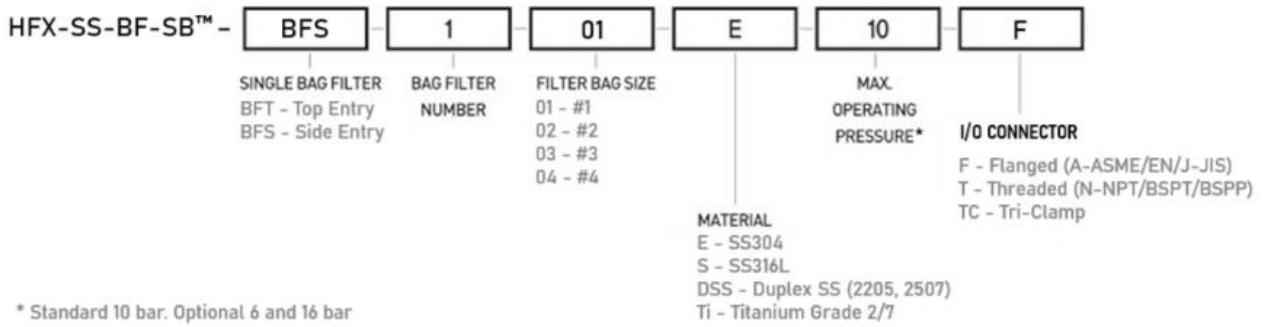
Engineered for Strength. Built for Reliability. Proven in Every Application.

Technical Specifications

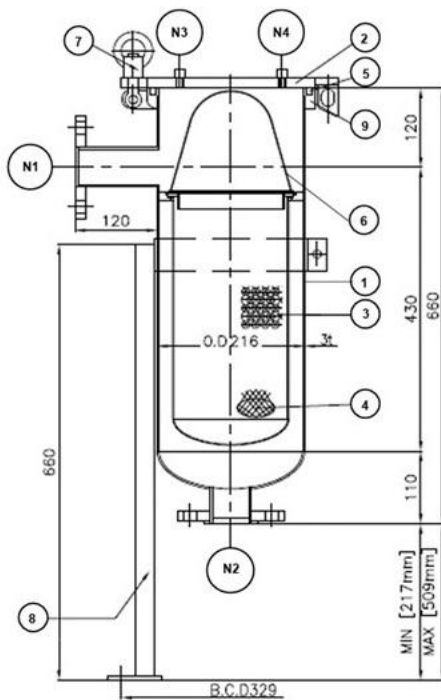
- **Model:** HFX-SS-BF-SB™ – Stainless Steel Single-Bag Housing
- **Filter compatibility:** #01 and #02 bags; compatible with felt/depth, mesh, or pleated media ($\approx 1\text{--}1000\ \mu\text{m}$). #03/#04 custom housings available on request
- **Housing material:** SS304 or SS316L (wetted and pressure parts); Duplex 2205 (and 2507 on request) for aggressive/chloride service; titanium on special request
- **Basket material:** Perforated stainless-steel support basket (SS316L standard for sanitary builds); electropolished option for hygiene-critical service
- **Seal options:** NBR (Buna-N), EPDM, Silicone, FKM (Viton®), PTFE, PTFE-enveloped gaskets (select per media/temperature/purity)
- **Closure options:** Quick-clamp, screw-cap, or swing-/eye-bolt lids; engineered for secure sealing and safe operation
- **Inlet/Outlet connections:** Top-entry or side-entry bodies; flanged (ANSI B16.5 Class 150, EN 1092-1 PN16, JIS B2220 10K) as standard; threaded NPT/BSPT/BSPP for utility models; sanitary Tri-Clamp (ISO 2852) optional for food/pharma
- **Vent & drain ports:** Vent (top) and drain (bottom) available for safe depressurisation and full drainage
- **Pressure rating:** Up to 10 bar at 20 °C (standard); up to 16 bar at 20 °C on reinforced/code builds (on request). Pressure de-rates with temperature
- **Temperature range:** $-20\ \text{°C}$ to $150\ \text{°C}$ service, gasket/closure dependent, with applicable pressure derating
- **Design pressure & code:** Designed to ASME Section VIII Div. 1 or PED 2014/68/EU as specified; stamped/conformity-documented models available. Hydrotested per applicable code requirements
- **Shell thickness:** Typically 3.0–5.0 mm, depending on size, rating and code
- **Flow range:** #01 up to $\sim 20\ \text{m}^3/\text{h}$; #02 up to $\sim 40\ \text{m}^3/\text{h}$, dependent on viscosity, micron rating and allowable Δp
- **Surface finish:** Industrial bead-blast as standard; sanitary polish (target $\leq 0.6\ \mu\text{m Ra}$) or electropolish (target $\leq 0.4\ \mu\text{m Ra}$) available for biotech/pharma (measured values recorded when specified)
- **Mounting:** Vertical mounting with integrated legs as standard; custom skid packages on request
- **Compliance options:** Food-contact compliant variants available (e.g., FDA 21 CFR; EU 1935/2004 & 10/2011) when specified and documented; USP Class VI elastomers available



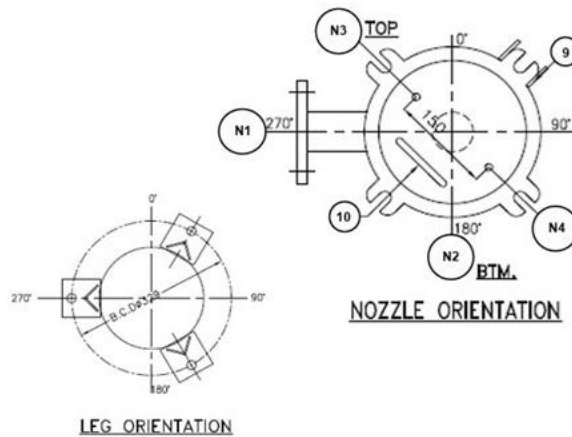
HFX-SS-BF-SB™ – BFS (Side Entry Single Bag Filter Housing)



HFX-SS-SB™ – BFS-1-01-E-10-J

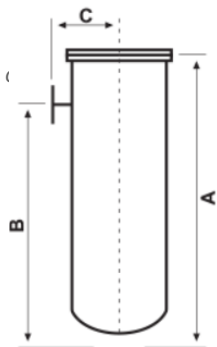


NO	部品名	数量
1	本体	1
2	蓋	1
3	バスケット	1
4	フィルターバッグ(別売)	1
5	O-リング(NBR)(P-220)	1
6	バッグ固定リング	1
7	スイングボルト&アイナット(M16)	4
8	レッグアセンブリー	1
9	ヒンジ	1
10	ハンドル	1



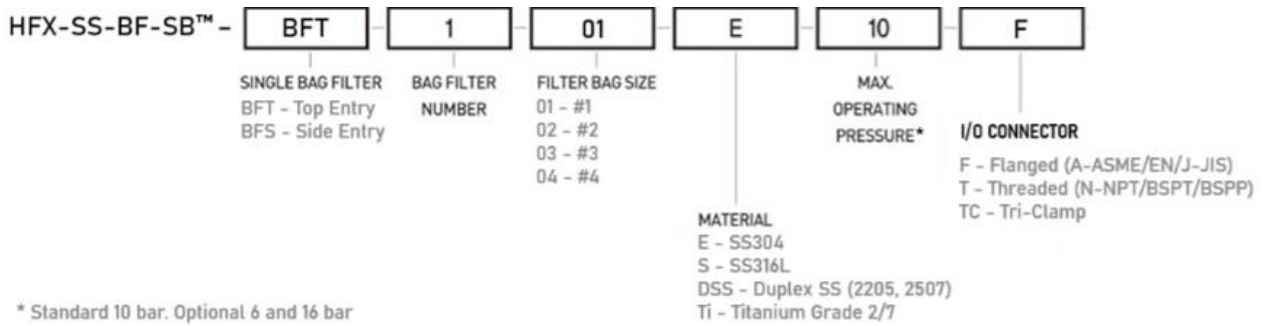
仕様	HFX-SS-SB™ – BFS-1-01-E-10-J	
最大/推奨流量 (m3/h)	20 / 10	
フィルター表面積 (㎡)	0.25	
バスケット(サイズ11)本数	1	
フィルターハウジング容量 (ℓ)	approx.18	
フィルターハウジング空重量 (kg)	approx.34	
設置方法	レッグアセンブリー (3本脚)	
材質	ハウジング	SCS13+SUS304 (接液部)
	バスケット	SUS304
	開閉部	SUS304 (スイングボルト・アイナット)
	その他	SUS304
最大使用圧力	max.1.0 MPa at 120℃	
取合 (接続)	N1 (流入側)	50A JIS 10K SOFF フランジ
	N2 (流出側)	50A JIS 10K LAP ジョイント フランジ
	N3/N4	8A PTめねじ(プラグ付き)
内外面表面処理	バフ研磨 #200+EP	
蓋	ヒンジ付	
梱包 (プラスチックダンボール)	概略寸法 (W410 x L950 x H360)	

HFX-SS-BF-SB™ – BFS (Side Entry)		
Model	HFX-SS-BF-SB™ – BFS-1-01	HFX-SS-BF-SB™ – BFS-1-02
Material of Construction	SS304 or SS316L (wetted & pressure parts)	SS304 or SS316L (wetted & pressure parts)
Max Operating Pressure	10 bar (145 psi) @ 20 °C	10 bar (145 psi) @ 20 °C
Max Operating Temp	150 °C (depending on elastomer selection)	150 °C (depending on elastomer selection)
Standard Connections (Inlet/Outlet)	Threaded: NPT (ASME B1.20.1) or BSPT (ISO 7-1), 1"–2"	Threaded: NPT (ASME B1.20.1) or BSPT (ISO 7-1), 1"–2"
	Flanged: ASME B16.5 Class 150 (NPS 1"–2") or EN 1092-1 PN16 (DN25–DN50)	Flanged: ASME B16.5 Class 150 (NPS 1"–2") or EN 1092-1 PN16 (DN25–DN50)
	Optional: Tri-Clamp (ISO 2852) 1.5" / 2"	Optional: Tri-Clamp (ISO 2852) 1.5" / 2"
Vent & Drain Ports	½" BSPT (RC) female standard; NPT optional — top vent for safe depressurization; bottom drain for complete fluid removal.	½" BSPT (RC) female standard; NPT optional — top vent for safe depressurization; bottom drain for complete fluid removal.
Maximum Flow Rate^A	~20 m ³ /h (water @ 25 °C, ΔP ≤ 0.5 bar)	~40 m ³ /h (water @ 25 °C, ΔP ≤ 0.5 bar)
Recommended Flow Rate^A	~10 m ³ /h (water @ 25 °C, ΔP ≤ 0.5 bar)	~20 m ³ /h (water @ 25 °C, ΔP ≤ 0.5 bar)
Bag Size	#01 (7" × 16")	#02 (7" × 32")
Effective Filter Surface Area	~0.25 m ²	~0.50 m ²
Internal Volume	~18 L	~28 L
Net Weight (dry, approx.)	~34 kg	~40 kg
Dimensions	A = 534 mm	A = 825 mm
	B = 434 mm	B = 725 mm
	C = 295 mm	C = 295 mm

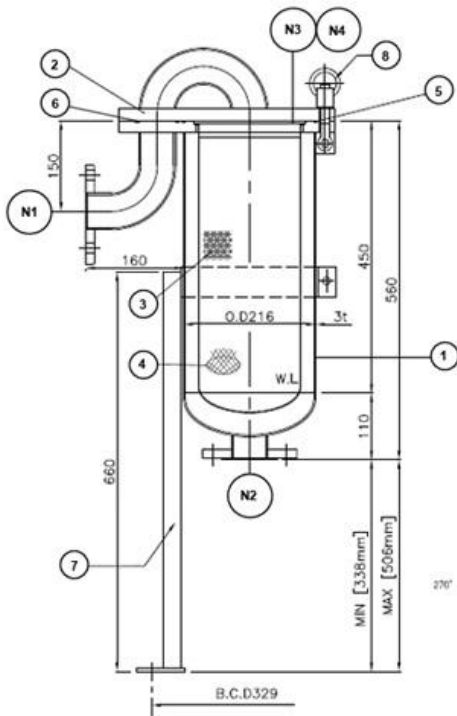


^A Flow rates based on clean water at 25 °C and initial differential pressure ≤ 0.5 bar. Actual performance micron rating, media type, viscosity, and solids loading.

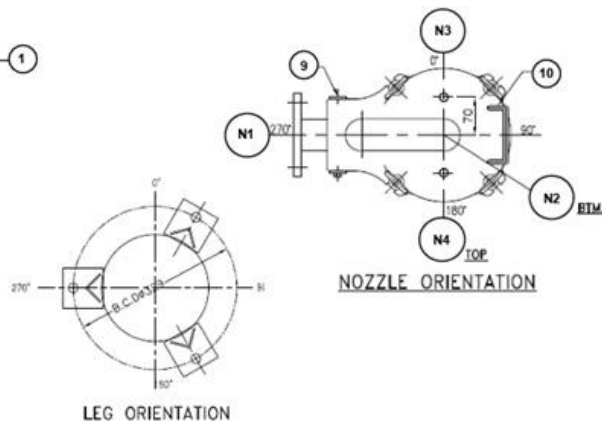
HFX-SS-BF-SB™ – BFT (Top Entry Single Bag Filter Housing)



HFX-SS-SB™ – BFT-1-01-E-10-J

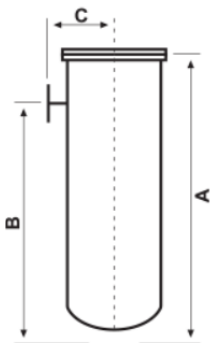


NO	部品名	数量
1	本体	1
2	蓋(スワンネック)	1
3	バスケット	1
4	フィルターバッグ(別売)	1
5	O-リング(NBR)(G-210)	1
6	O-リング(NBR)(P-60)	1
7	レッグアセンブリー	1
8	スイングボルト&アイナット(M16)	4
9	ヒンジ	1
10	ハンドル	1



仕様	HFX-SS-SB™ – BFT-1-01-E-10-J
最大/推奨流量 (m3/h)	20 / 10
フィルター表面積 (㎡)	0.25
バスケット(サイズ11)本数	1
フィルターハウジング容量 (ℓ)	approx.18
フィルターハウジング空重量 (kg)	approx.34
設置方法	レッグアセンブリー (3本脚)
材質	SUS304 (接液部)
	SUS304
	SUS304 (スイングボルト・アイナット)
	SUS304
最大使用圧力	max.1.0 MPa at 120℃
取合 (接続)	N1 (流入側) 50A JIS 10K SOFF フランジ
	N2 (流出側) 50A JIS 10K LAPジョイント フランジ
	N3/N4 8A PTめねじ(プラグ付き)
内外表面処理	バフ研磨 #200+EP
蓋	ヒンジ付
梱包 (プラスチックダンボール)	概略寸法 (W410x L950 x H360)

HFX-SS-BF-SB™ – BFT (Top Entry)		
Model	HFX-SS-BF-SB™ – BFT-1-01	HFX-SS-BF-SB™ – BFT-1-02
Material of Construction	SS304 or SS316L (wetted & pressure parts)	SS304 or SS316L (wetted & pressure parts)
Max Operating Pressure	10 bar (145 psi) @ 20 °C	10 bar (145 psi) @ 20 °C
Max Operating Temp	150 °C (depending on elastomer selection)	150 °C (depending on elastomer selection)
Standard Connections (Inlet/Outlet)	Threaded: NPT (ASME B1.20.1) or BSPT (ISO 7-1), 1"–2"	Threaded: NPT (ASME B1.20.1) or BSPT (ISO 7-1), 1"–2"
	Flanged: ASME B16.5 Class 150 (NPS 1"–2") or EN 1092-1 PN16 (DN25–DN50)	Flanged: ASME B16.5 Class 150 (NPS 1"–2") or EN 1092-1 PN16 (DN25–DN50)
	Optional: Tri-Clamp (ISO 2852) 1.5" / 2"	Optional: Tri-Clamp (ISO 2852) 1.5" / 2"
Vent & Drain Ports	½" BSPT (RC) female standard; NPT optional — top vent for safe depressurization; bottom drain for complete fluid removal.	½" BSPT (RC) female standard; NPT optional — top vent for safe depressurization; bottom drain for complete fluid removal.
Maximum Flow Rate^A	~20 m ³ /h (water @ 25 °C, ΔP ≤ 0.5 bar)	~40 m ³ /h (water @ 25 °C, ΔP ≤ 0.5 bar)
Recommended Flow Rate^A	~10 m ³ /h (water @ 25 °C, ΔP ≤ 0.5 bar)	~20 m ³ /h (water @ 25 °C, ΔP ≤ 0.5 bar)
Bag Size	#01 (7" × 16")	#02 (7" × 32")
Effective Filter Surface Area	~0.25 m ²	~0.50 m ²
Internal Volume	~18 L	~28 L
Net Weight (dry, approx.)	~34 kg	~40 kg
Dimensions	A = 534 mm	A = 825 mm
	B = 434 mm	B = 725 mm
	C = 295 mm	C = 295 mm



^A Flow rates based on clean water at 25 °C and initial differential pressure ≤ 0.5 bar. Actual performance depends on bag micron rating, media type, viscosity, and solids loading.

All data, dimensions, and ratings are provided for general reference only. FiltraCore housings are designed and hydrotested in accordance with relevant industry standards; however, actual performance will vary with process conditions, media, and installation. Maximum operating pressure and temperature are subject to material selection, gasket/elastomer choice, and design code (ASME/PED, where applicable). Standard rating is 10 bar (145 psi) @ 20 °C, with a maximum operating temperature of 120 °C, or up to 150 °C with PTFE/silicone seals for SIP duty.

Chemical compatibility of housing materials, seals, and gaskets with the process fluid is the sole responsibility of the user; data provided are general guidelines derived from industry sources and laboratory testing, and actual performance may vary with concentration, temperature, and process variables.

Wetted parts in SS304/SS316L (optional Duplex SS 2205/2507 or Titanium Grade 2) provide broad resistance to aqueous solutions, hydrocarbons, and process chemicals not corrosive to stainless steel, while elastomer options (EPDM, Viton®, PTFE, PTFE-encapsulated) extend compatibility across most industrial and sanitary applications. For specific chemical resistance, consult the FiltraCore Chemical Resistance Guide or contact our technical team.

FiltraCore assumes no liability for improper use, chemical incompatibility, installation, or operation beyond published ratings. Specifications are subject to change without notice as part of continuous product improvement.

All OEM product names are trademarks of their respective holders. Use of these names does not imply affiliation or endorsement. Images shown have been professionally enhanced for visual clarity. Actual product details and appearance may differ.



■ sales@filtracoreasia.com ■ www.filtracoreasia.com ■ +65 89-FILTER (+65 89-345837)

All information and recommendations appearing in this brochure concerning the use of products described herein are based on tests believed to be reliable. However, it is the user's responsibility to determine the suitability of such products for their own use. Since actual use is beyond our control, no guarantee, expressed or implied, is made by FiltraCore Asia regarding the effects or results of such use. FiltraCore Asia assumes no liability arising from the use of these products. This document is not to be construed as complete, as additional information may be necessary under specific conditions or due to applicable laws and regulations.

© 2025 FiltraCore Asia. All rights reserved. All trademarks and registered trademarks are the property of their respective owners.