



## LFX™ Series – Liquid Filtration Excellence Engineered for Results

### LFX-CLNG™ High-Pressure Gas Coalescing Filter Cartridges Product Highlights

Filtracore Asia's **LFX-CLNG™ High-Pressure Gas Coalescing Filter Cartridges** deliver high-efficiency removal of aerosols, entrained liquids, and fine particulate from **regasified LNG (gas)** and **high-pressure natural-gas** transfer streams. Designed for gas-phase duty downstream of vaporizers and across compression/metering trains, LFX-CLNG™ protects vaporizers, heat exchangers, compressors, and downstream equipment in LNG terminals and industrial gas networks.



A multi-layer **borosilicate microglass** coalescing pack with a **hydrophobic/oleophobic drainage** layer delivers **up to 99.97-99.999 % efficiency at 0.3 μm** (grade-dependent) for ultra-clean send-out gas. **Large-format 6" (≈152 mm) OD × 40" (≈1016 mm)** cartridges maximise area and liquid-holding capacity for low clean Δp and long service life. The range is tuned for **low clean Δp** and **extended run lengths**; in typical deployments elements are changed at about **1 bar** differential, with models available for higher differentials (to **~3.5 bar**) and **moderate operating temperatures (≈ 82-93 °C)**, depending on construction.

Standard elements are supplied in industry-standard large-OD formats for **drop-in use** when **length/OD/end-seal** and internal hardware match the installed housing. **System pressure rating and code compliance** (e.g., ASME VIII/B31.3/B31.8, NACE MR0175 / ISO 15156) are determined by the **vessel and materials specification**, not the cartridge.

For LNG terminal operators and industrial gas processors, LFX-CLNG™ reduces carryover, protects mission-critical assets, and supports gas-quality targets – often with fewer elements and extended service intervals.

**Engineered for High-Pressure Gas Duty. Proven in Regas & Pipeline Service.**

## Applications - LFX-CLNG™ High-Pressure Gas Coalescing Filter Cartridges

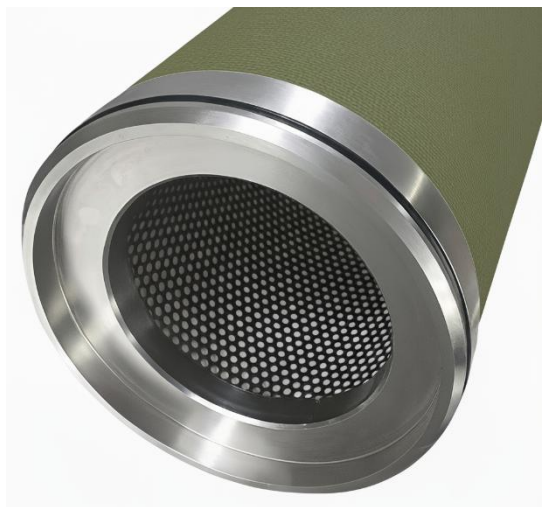
**LFX-CLNG™ High-Pressure Gas Coalescing Filter Cartridges** are deployed where high-purity gas-phase streams protect LNG regasification assets and high-pressure natural-gas systems. Typical applications include:

- **LNG terminals & regasification:** downstream of vaporizers and upstream of meters/compressors to remove aerosols and fine solids from send-out gas; helps maintain pipeline cleanliness and analyser stability
- **Boil-off gas (BOG) recovery & fuel-gas conditioning:** compressor suction/discharge coalescing to limit lube-oil carryover; polish fuel gas for gas turbines/boilers/heaters
- **Pipeline & custody transfer:** upstream of metering/prover skids, pressure regulators, and analysers to strip oil mist, condensate droplets, and particulate
- **Gas dehydration/sweetening trains:** coalescing around amine/glycol contactors and regeneration loops to mitigate solvent aerosol carryover and protect downstream turbomachinery
- **Power & industrial users:** fuel-gas polishing for turbines, engines, and HRSGs in chemical plants, utilities, and industrial energy systems
- **Hydrogen-enriched NG (H<sub>2</sub> blends):** coalescing of mixed streams in distribution or industrial use where **materials compatibility** and safety standards are met (confirm elastomers/metallics for the specified H<sub>2</sub> fraction)

## OEM Compatibility & Replacement Cross-Reference

**LFX-CLNG™ High-Pressure Gas Coalescing Filter Cartridges** are produced in industry-standard large-OD formats for gas-phase service (natural gas / regasified LNG). Representative equivalents<sup>1</sup> include:

- **Parker Hannifin / PECO – PEACH® DynaSep™ PCHG** gas filter-separator cartridges for **natural-gas** streams; designed for **PECO Series 75 & 85** vessels (and similar competitor vessels)
- **Parker Hannifin / PECO – PEACH® Gemini PGC / PGC2** gas filter-coalescer cartridges for **PEACH Gemini PuraSep®** vessels (horizontal/vertical gas filter-coalescers; dual-path design; 0.3-µm classes available)
- **Parker Hannifin / PECO – DynaCeptor™ NGGC** gas coalescer cartridges (depth-style, large-OD) for **natural-gas** coalescing duty
- **Pall – SepraSol™ / SepraSol™ Plus** liquid/gas coalescer cartridges for midstream / pipeline gas conditioning (high liquid loading capability; large-diameter elements)
- **Facet (Filtration Group) – air/gas coalescer** cartridges and two-stage coalescer-separator systems (industrial gas/liquid separation families)



## Ordering Information - LFX-CLNG™ High-Pressure Gas Coalescing Filter Cartridges

When placing an order, please specify the following:

- **Element size (OD × length)**

Standard large-format: ≈152 mm (6") OD × 1016 mm (40"). Optional 1524 mm (60") on selected builds. Other lengths/ODs can be matched to installed vessel internals

- **End configuration / sealing**

SOE or DOE variants per housing design; specify O-ring location and size, seat geometry, and any locator/tie-rod details to match the vessel (e.g., Gemini/PuraSep®, Series 75/85 filter-separator)



- **Flow direction (model / vessel dependent)**

Dual-path coalescing (pre-coalesce then drainage) with outside→inside and inside→outside stages as defined by the element/vessel family. Confirm the required flow path for your housing

- **Efficiency class / rating**

Select by duty: up to 99.999% at 0.3 μm aerosol rating (DOP method) with ≥99.7% removal for solids >0.3 μm available on specified classes. State the target aerosol cut-size/efficiency

- **Materials of construction (wetted)**

Borosilicate microglass coalescing media with hydrophobic/oleophobic drainage layer; metallic or polymer hardware per service; positive O-ring seal. (Amine-compatible variants available by model.)

- **Elastomers (O-rings)**

FKM (Viton®), NBR/HNBR; FFKM on request for aggressive service. (*Hydrocarbon gas service commonly avoids EPDM.*)

- **Element operating limits (typical)**

Recommended change-out  $\Delta p \approx 1.03$  bar; maximum element  $\Delta p \approx 3.5$  bar. Maximum element temperature  $\approx 82$  °C (lower when water-wet, e.g.,  $\approx 65$  °C on some classes). Do not exceed the vessel rating.

---

<sup>1</sup> Use as form-fit-function guidance only. Match outer diameter, length, end-seal style, and vessel internals (tube-sheets, tie-rods, seals) on the installed housing. Verify gas service (not liquid/liquid), flow direction, and efficiency class before substitution.

All OEM product names are trademarks of their respective holders. Use of these names does not imply affiliation or endorsement. Images shown have been professionally enhanced for visual clarity. Actual product details and appearance may differ.



■ [sales@filtracoreasia.com](mailto:sales@filtracoreasia.com) ■ [www.filtracoreasia.com](http://www.filtracoreasia.com) ■ +65 89-FILTER (+65 89-345837)

All information and recommendations appearing in this brochure concerning the use of products described herein are based on tests believed to be reliable. However, it is the user's responsibility to determine the suitability of such products for their own use. Since actual use is beyond our control, no guarantee, expressed or implied, is made by FiltraCore Asia regarding the effects or results of such use. FiltraCore Asia assumes no liability arising from the use of these products. This document is not to be construed as complete, as additional information may be necessary under specific conditions or due to applicable laws and regulations.

© 2025 FiltraCore Asia. All rights reserved. All trademarks and registered trademarks are the property of their respective owners.